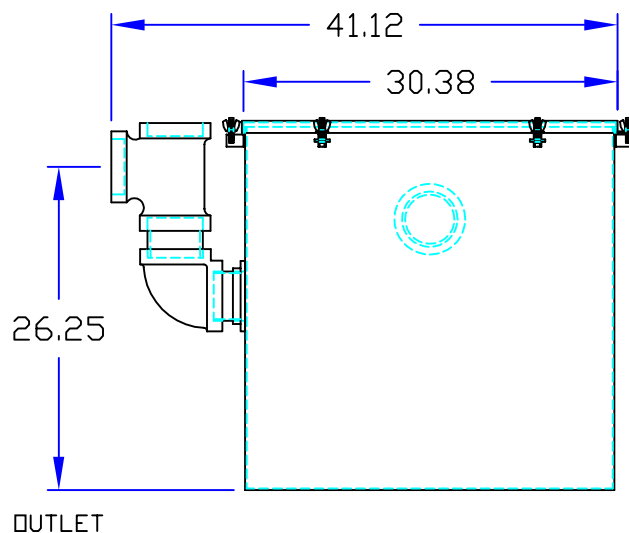
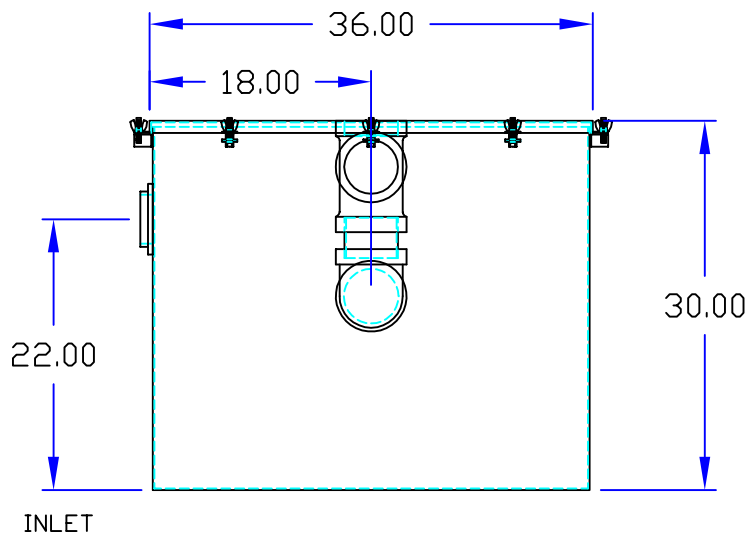
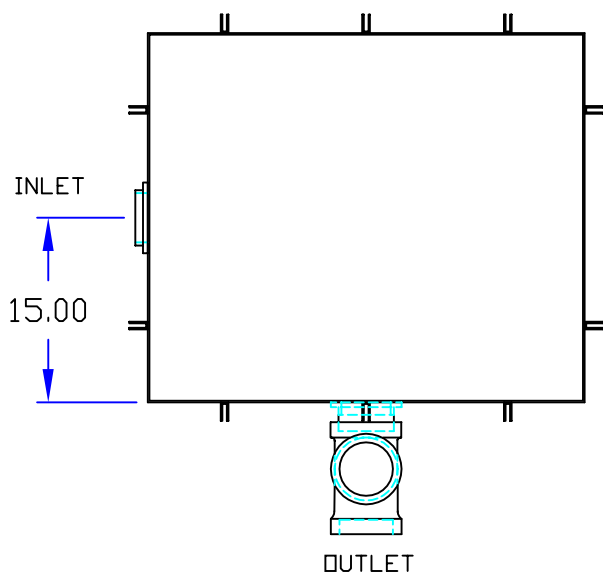


DRAWN BY W.R.W.	QUOTE #	JOB NAME
--------------------	---------	----------

OPTIONAL FEATURES (ADDITIONAL COST)

- ☐ EPOXY COATING
☐ STAINLESS STEEL CONSTRUCTION
☐ SEDIMENT BASKET ☐ FILTER MEDIA
☐ DRAW OFF VALVE
☐ ALTERNATE INLET & OUTLET SIZE ____ INCHES



Specifications

Rockford Model G-3628-R all welded 10 Ga. steel separator for on the floor (or partially recessed) installation, 100 g.p.m. intermittent flow, 4.00" tapped inlet and outlet connection, 350 lbs. greasy sludge capacity, visible double-wall outside trap seal, easily removable filter screen and separator screen, gasketed cover hand tightened to body with safety catch bolt assemblies, enamel coated inside & outside.

Optional features (Additional cost) listed above

Approved By	Company	Date
-------------	---------	------