



Rockford Sanitary Systems, Inc.

ROCKFORD, IL 61125-0963

(815) 229-5077 - (800) 747-5077 - FAX (815) 229-5108

WEB SITE-www.rkfdseparators.com E MAIL-rssem@inwave.com

MODEL NO. G-1012-R

GREASE SEPARATOR

DRAWN BY

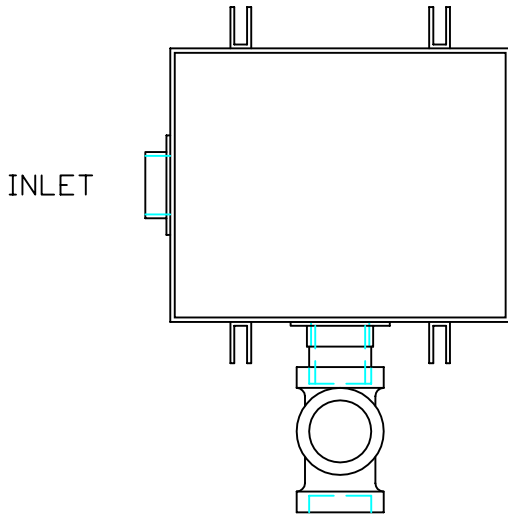
W.R.W.

QUOTE #

JOB NAME

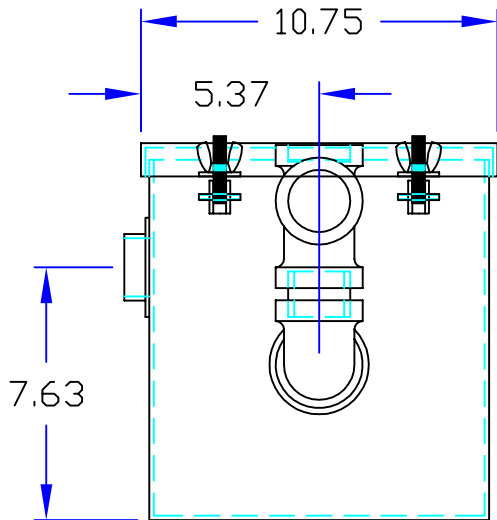
#### OPTIONAL FEATURES (ADDITIONAL COST)

- ☐ EPOXY COATING
- ☐ STAINLESS STEEL CONSTRUCTION
- ☐ SEDIMENT BASKET ☐ FILTER MEDIA
- ☐ DRAW OFF VALVE
- ☐ ALTERNATE INLET & OUTLET SIZE \_\_\_\_ INCHES

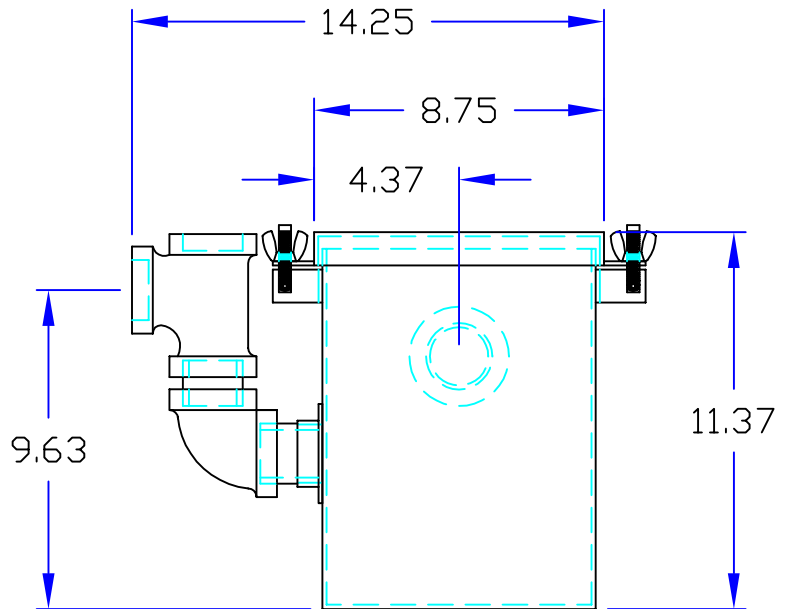


INLET

OUTLET



INLET



OUTLET

## Specifications

Rockford Model G-1012-R all welded 10 Ga. steel separator for on the floor (or partially recessed) installation, 8 g.p.m. intermittent flow, 1.50" tapped inlet and outlet connection, 12 lbs. greasy sludge capacity, visible double-wall outside trap seal, easily removable filter screen and separator screen, gasketed cover hand tightened to body with safety catch bolt assemblies, enamel coated inside & outside.

Optional features (Additional cost) listed above

Approved By

Company

Date